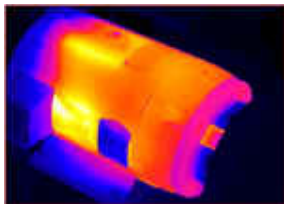


Infrared Thermography for Preventive Maintenance & Heat Fault Detection

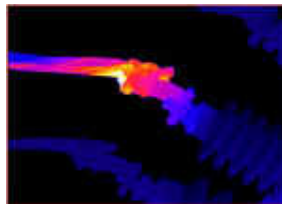
Infrared Thermography is a cost-effective and non-invasive method of measuring temperature. It is used as an aid for maintenance in systems and machines where excessive heat can cause equipment downtime and failure.



- Our Thermo Tracer TH7102Wx Camera is one of the smallest and lightest thermal cameras in the world, allowing total portability.
- With full LC Display for instant on-site diagnostics
- Temperature measuring range -40°C to 500°C
- Real time memory for image storage and full PC interface with Mikrospec Software



Overheated
Motor Windings

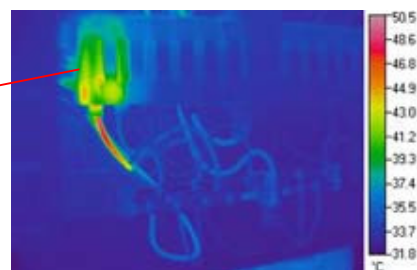


Overheated Transformer
Connectors



Fuse Switch
Component Failure

Thermal Imaging can detect anomalies often invisible to the naked eye and allows corrective action to be taken before costly system failures occur.



Hot terminal in a fuse box causing intermittent lighting problems detected by thermography